



NICOLE STRASBURG | TIDAL CHANGE



ON EXHIBIT:  
MARCH 31 - JUNE 3, 2007

The ebb and flow of ocean waters converging upon the shoreline creates endless possibilities for reverie in Nicole Strasburg's graceful new paintings. With her unique lyrical visual language, the artist explores our ancient connection to the sea, while the transitory effects of shifting tides echo the essence of our life experience.

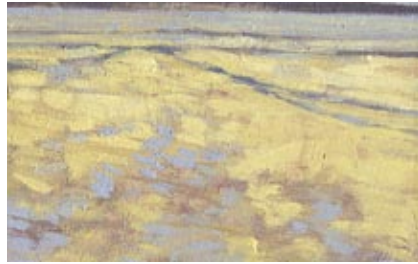
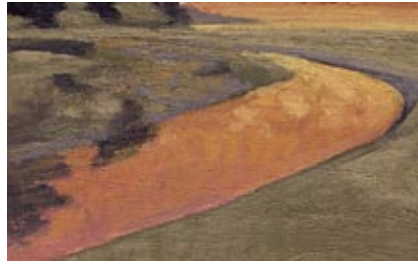
Expanding her palette to include a broad range of hues, Strasburg presents warm rose, coral and lavender reflections that interact with ethereal indigo and turquoise shadows. Elements of vibrant color and atmospheric light sweep effortlessly across these dynamic contemporary compositions.

As Strasburg's work evolves, an increasingly abstract sensibility informs her undulating natural forms. For the first time, suggestions of human figures emerge from the meandering shapes of water, sand, rocks and sky.

Born in Salt Lake City, the artist moved to Santa Barbara as a child and developed a strong connection to the Pacific Ocean. After earning a B.A. in art from UC Santa Barbara, the artist has received numerous awards and wide recognition throughout California and beyond.

An infinite universe may be found in these microcosms of shimmering waters, captured at the moment they meet terra firma. A sense of the sublime exists in Strasburg's compositions of reflected sunlight, sand and rhythmic ocean waves.

-Nancy Clare Caponi, Director of Contemporary Art









## LIST OF ILLUSTRATIONS

1. TIDAL STREAM, 2006 | 48 x 24 INCHES | OIL ON BIRCH PANEL
- 2-13. POSTCARD(s) 01-12, 2007 | 3.5 x 5.5 INCHES | OIL ON RECYCLED WOOD
14. CORAL SAND | 48 x 60 INCHES | OIL ON BIRCH PANEL
15. SENTINEL 02, 2006-07 | 60 x 60 INCHES | OIL ON BIRCH PANEL
16. TIDAL ZONE 03, 2006 | 12 x 12 INCHES | OIL ON CANVAS
17. TIDAL ZONE 06, 2006 | 12 x 12 INCHES | OIL ON CANVAS
18. TIDAL ZONE 01, 2006 | 12 x 12 INCHES | OIL ON CANVAS
19. TIDAL ZONE 04, 2006 | 12 x 12 INCHES | OIL ON CANVAS
20. TIDAL ZONE 07, 2006 | 12 x 12 INCHES | OIL ON CANVAS
21. TIDAL ZONE 05, 2006 | 12 x 12 INCHES | OIL ON CANVAS
22. TWILIGHT HORIZON | 19.5 x 29.5 INCHES | OIL ON BIRCH PANEL
23. TIDAL PATTERN 04, 2006 | 24 x 24 INCHES | OIL ON BIRCH PANEL



RECEPTION FOR THE ARTIST  
SATURDAY, MARCH 31, 2007  
FROM 5 - 7 PM  
7 EAST ANAPAMU STREET  
SANTA BARBARA, CALIFORNIA



# Sullivan Goss

AN AMERICAN GALLERY

*7 East Anapamu Street  
Santa Barbara, CA 93101  
(805) 730-1460*

[www.sullivangoss.com](http://www.sullivangoss.com)

**FADA**

COVER:

TIDAL ZONE 09, 2006 | 12 x 12 INCHES | OIL ON CANVAS

TIDAL ZONE 01, 2006 | 12 x 12 INCHES | OIL ON CANVAS

TIDAL ZONE 04, 2006 | 12 x 12 INCHES | OIL ON CANVAS