



157394

STRONG, RAY.

Coastal Inlet,

47.75 x 59.75 inches | Oil on board

Signed lower right



162021

STRONG, RAY.

McClure's Ranch, Pierce Point, c. 1960

24 x 48 inches | Oil on board

Signed lower left



157396

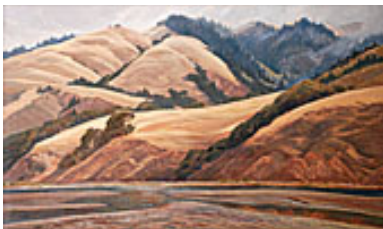
NOT FOR SALE

STRONG, RAY.

McClure's Ranch, Pierce Point, c. 1960

24 x 48 inches | Oil on board

Signed lower left



157395

STRONG, RAY.

Rhythmic Hills (Marin Hills), 1974

30 x 50 inches | Oil on canvas

Signed lower left



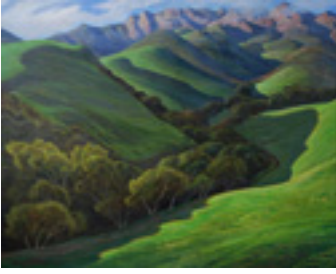
153364

STRONG, RAY.

Hills of Gold (Lucas Valley), 1969

24 x 36 inches | Oil on panel

Signed lower right



154832

STRONG, RAY.

Green Valley Reaching Toward Purple Peak, c early

24 x 30 inches | Oil on masonite

Signed lower right



150806

STRONG, RAY.

California, Green Hills, c 1980s

17 x 25 inches | Oil on board

Signed lower left



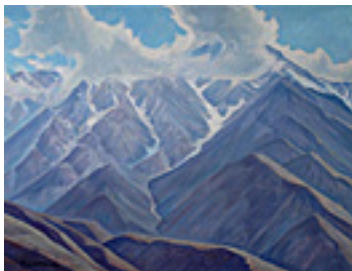
154766

STRONG, RAY.

Hurricane Deck Back Country, c late 1970s

18.75 x 36 inches | Oil on board

Signed lower right



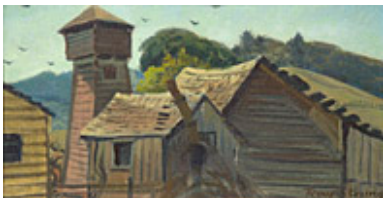
151350

STRONG, RAY.

San Jacinto Mountains, Early 1970s

18 x 24 inches | Oil on board

Signed lower right



151316

STRONG, RAY.

Farm, Early 1950s

6.5 x 12 inches | Oil on board

Signed lower right



152722

STRONG, RAY.

Cherryville Firs, mid-1930s

8 x 10 inches | Oil on masonite

Signed lower left



127816

STRONG, RAY.

Treeline Sketch on Mt Hood, Oregon, 1950

9 x 13.5 inches | Oil on board

Signed lower left Dated and titled



152176

STRONG, RAY.

Snowy Hillside with Conifers at Center, 5/21/1952

8 x 10 inches | Oil on canvas over

Signed on back



162022

STRONG, RAY.

Gualala River, 1987

12 x 23.75 inches | Oil on board

Signed lower left



157495

STRONG, RAY.

Soaring Figure, 1966 - 30., 1966

10.5 x 4.5 inches | Mixed media on

Signed lower right



157497

STRONG, RAY.

Song for Jeff Buckner, 10/16/1966 - 8th.,

6.5 x 5.5 inches | Mixed media on

Signed lower right