



162113

ABBOTT, WHITNEY BROOKS .

Fernald Point in the Clearing Wind, 2019

11 x 14 inches | Oil on canvas

Signed lower right



162103

ABBOTT, MEREDITH BROOKS .

El Capitan, 2009

24 x 30 inches | Oil on canvas

Signed



162089

ARCHER, DONALD.

Above the Bay,

34 x 30 inches | Mixed media on

Signed



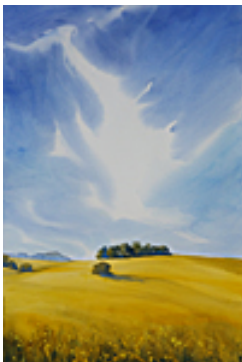
162088

BURTT, MARCIA.

Break in the Weather,

19.5 x 23 inches | Acrylic on canvas

Signed



162097

CHAPMAN, CHRIS.

Gaviota Spring,

21.5 x 13.5 inches | Watercolor on

Signed



162098

CHAPMAN, CHRIS.

Dos Pueblos Evening,

18 x 24 inches | Oil on canvas

Signed



162087

COMER, JOHN.

Low Tide On A Point,

10 x 30 inches | Oil on linen

Signed lower right



162092

DEWEY, WILLIAM.

Hollister Ranch Surf, Bulitos, 2018

32 x 48 inches | Photograph on

Signed



162119

DRURY, MICHAEL.

Spring Morning at Point Conception,

24 x 40 inches | Oil on canvas

Signed lower left



162110

GARCIA, RICK.

The Glow, 2019

24 x 24 inches | Oil on board

Signed



162105

GIVENS, CARRIE.

Gaviota Creek Flood Plain,

16 x 20 inches | Pastel on paper

Signed



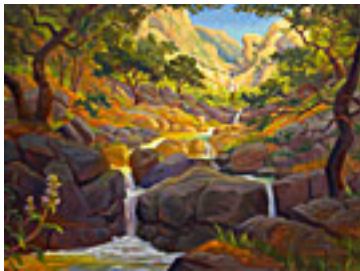
162106

GIVENS, CARRIE.

Gaviota Pass Chaparral,

16 x 20 inches | Pastel on paper

Signed



162086

GLEASON, KEVIN.

The Path to Seven Falls, 2019

36 x 48 inches | Oil on linen

Signed lower right



162091

HANSEN, WHITNEY BROOKS .

Mustard Fields,

11 x 18 inches | Oil on paper

Signed

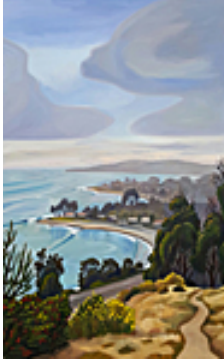
162206

HANSEN, WHITNEY BROOKS .

Untitled (Blue Mountains),

11.5 x 17.75 inches | Oil on paper

Signed



162107

HARPER, JEREMY.

Fernald Point, 2019

48 x 30 inches | Oil on panel

Signed



162093

HUNTER, RAY.

After the Storm - Goleta Slough, 2019

13 x 39 inches | Watercolor on

Signed



162100

IWERKS, JOHN.

San Marcos Foothills,

7.5 x 20.5 inches | Oil on board

Signed



162099

IWERKS, JOHN.

Eagle Canyon, 2019

15 x 30 inches | Oil on board

Signed



162116

LOPEZ, MANNY.

Storm Surge, 2019

16 x 20 inches | Oil on panel

Signed



162102

MITCHELL, WILLIAM.

Santa Barbara South Coast, 2017

16 x 12 inches | Oil on panel

Signed



162101

MITCHELL, WILLIAM.

Spring Clearing, 2019

20 x 12 inches | Oil on panel

Signed



162115

MUTTI, LINDA.

Morning Stroll, Hot Coffee Ahead, 2019

16 x 20 inches | Pastel on paper

Signed lower right



162109

ROBINSON, ROB.

Leaving Point Conception, 2019

20 x 24 inches | Oil on canvas

Signed lower right



162095

SANDERS, ANN.

Last Light, 2019

16 x 12 inches | Pastel on paper

Signed



162096

SANDERS, ANN.

The Point, 2019

12 x 16 inches | Pastel on paper

Signed lower right



162104

SCHLOSS, RICHARD.

Montecito Valley, 2001

20 x 35 inches | Oil on canvas

Signed



162111

SMITH, SKIP.

Over the Sea, 2019

8 x 10 inches | Oil on canvas

Signed lower left



162125

TELLO, ARTURO.

Painting Path, 2019

30 x 48 inches | Acrylic on canvas



162094

VAN STEIN, THOMAS.

Moonrise from Summerland, 2019

14 x 18 inches | Oil on panel

Signed



162117

VEDDER, SARAH.

Casitas Pass from the Mesa, 2019

18 x 24 inches | Oil on board

Signed



162118

VEDDER, SARAH.

Sycamores in the Canyon - Carpinteria Creek, 2019

20 x 30 inches | Oil on linen

Signed



162112

WULLBRANDT, JOHN.

The Peaceable Kingdom,

29 x 30 inches | Acrylic on canvas

Signed lower right